



Hiltingbury Lakes Newsletter - January 2020

Hello and welcome to the first Hiltingbury Lakes newsletter to keep you informed about the transformation work taking place in the coming months.

The much needed work will restore the popular beauty spot back to its former glory by:

- improving water flows through the lakes
- removing invasive plants and restoring historical woodland
- improving paths
- protecting wildlife
- providing better visitor information

The Chandler's Ford and Hiltingbury Local Area Committee have approved £260,000 for the transformation project. There are five phases to the works:

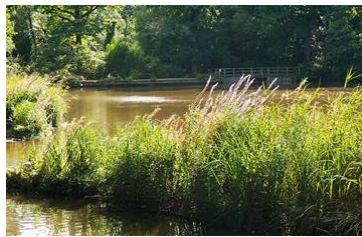
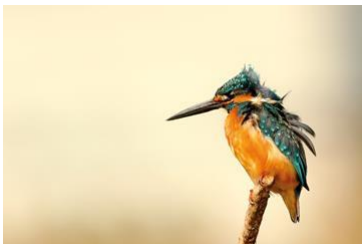
- **PHASE 1** - Removal of Invasive trees and plants. Weekly volunteer tasks started in November cutting back and removing laurel and rhododendron bushes. Further information on the work of the volunteers is featured below. A habitat works map showing the locations where contractors will be working in 2020 is available on our project web page.
- **PHASE 2** – Improving the water system. During January and February 2020 a plan will be developed to enhance the main lake, ponds and river banks, identifying all locations where bank repairs are needed. The improvement works will be completed by the end of July 2020 subject to dry weather conditions.
- **PHASE 3** - Increase wild flowers, reed bed works. The details of this phase are yet to be confirmed and will follow the completion of all tree, path and engineering works.
- **PHASE 4** - Re-instatement of Footpaths. A condition assessment of paths will be undertaken in February 2020 and proposal of path works will be prepared. A map showing the locations of the existing paths on site is available on our project web page. Path works will be completed by

the end of July, subject to dry weather conditions and following the completion of tree and watercourse engineering works.

PHASE 5 - Interpretation boards, benches, litter bins, fencing. During February 2020 a proposal will be prepared for the installation and repair of some of the site infrastructure including; benches, bins, and interpretation boards. From February to July these infrastructure improvements will be carried out alongside the path works programme.

A more detailed project timetable is available in the Update section of our dedicated project web page www.eastleigh.gov.uk/hiltingburylakes.

We welcome comments on the project. You can contact us using the details shown at the bottom of this newsletter.



Volunteer Update



We have a fantastic team of volunteers helping with the project who have achieved so much in such a short space of time. A big thank you to everyone who has helped so far!

The volunteers began working in November.

On the first day the team cleared the non-native invasive laurel and rhododendron from around the Lake Road southern entrance and nearby paths, creating a much lighter and brighter entrance way.



The following week the team continued clearing back invasive laurel and rhododendron along the southern path from Lake Road towards Kingsway.

Visitors commented positively on the transformation and were pleased with the improvements.

Over the coming weeks the team removed more invasive laurel and rhododendron from the path entrance on the western embankment to the Main Lake. Once the evergreen foliage was removed, it revealed beautiful views of the Main Lake from the path.

During the day they received more positive feedback from the local community about the improvements.



Just before Christmas, the volunteers spent the morning cutting and removing laurel from the bank overlooking the Main Lake. By the end of the task the team were very soggy but very satisfied with their achievements!



Future Volunteer Tasks

The volunteers meet every* Thursday from 10am - 3pm with breaks for tea and lunch (please bring a packed lunch with you.) All tools, gloves and protective equipment are provided. Please wear outdoor shoes - trainers are fine. (* On the second Thursday of the month volunteer days will move to our nearby Hocombe Mead Local Nature Reserve to work alongside the Friends of Hocombe Mead).

We are always keen to welcome new people to join us on our tasks. You don't have to come along every session or stay for the whole task - we'll be pleased to see you even if it's just for a few hours.

And, of course, if you happen to walk past us on a Thursday we're always pleased to stop for a chat about what we're working on. To find out how you can become an Eastleigh Countryside Volunteer, please go to our project website: www.eastleigh.gov.uk/hiltingburylakes or email hiltingburylakes@eastleigh.gov.uk

Volunteer Tasks are run by Eastleigh Borough Council in partnership with our partner charity The Conservation Volunteers.

Thursday 9 January 2020 - Hocombe Mead Local Nature Reserve, meet at the Ashdown Road Entrance

Thursday 16 January 2020 – Hiltingbury Lakes

Thursday 23 January 2020 – Hiltingbury Lakes

Thursday 30 January 2020 – Hiltingbury Lakes

Thursday 6 February 2020 – Hiltingbury Lakes

Thursday 13 February 2020 - Hocombe Mead Local Nature Reserve, meet at the Ashdown Road Entrance

Thursday 20 February 2020 – Hiltingbury Lakes

Thursday 27 February 2020 – Hiltingbury Lakes

Thursday 4 March 2020 – Hiltingbury Lakes

Thursday 11 March 2020 - Hocombe Mead Local Nature Reserve, meet at the Ashdown Road Entrance

Thursday 18 March 2020 – Hiltingbury Lakes

Thursday 25 March 2020 – Hiltingbury Lakes

Subscribe to our newsletter to receive updates

Please email hiltingburylakes@eastleigh.gov.uk and we will add you to our newsletter database.

We'll always treat your personal details with the utmost care and only send you what you've asked to receive. [Here's how we will store and use your data](#)

Contact Details

Hiltingbury Lakes Project Team

email: hiltingburylakes@eastleigh.gov.uk

website: www.eastleigh.gov.uk/hiltingburylakes

[Edit your subscription](#) | [Unsubscribe](#)

Countryside Service
Itchen Valley Country Park
Allington Lane
West End
Southampton SO30 3HQ