

SHAPING Y♥UR COMMUNITY

Local Plan Engagement



What was 'Shaping Your Community' and why did we do it?

- share **information about the Local Plan**, what it is for and why we must have one
- to give residents and businesses the opportunity to **tell us what matters most to them**
- what facilities, homes, business premises and type of environment are most important?
- ensure that the information we collect **represents the views of all of our residents and businesses**



What did we find out?

- over 1,600 residents and businesses responded
- Four most important issues:
 - **Reducing traffic congestion**
 - **Keeping countryside gaps between our towns and villages**
 - **Medical facilities**
 - **Air quality and noise pollution**



How are we using the information?

Purpose was to share and gather information related to Eastleigh's local plan. However, the feedback can help us with many more things, now we must **make sure that all of this valuable information is used to inform:**

- Local Plan
- Masterplan
- Council services
- Local services
- Other public services



Masterplan

How is a masterplan different to the local plan?

Local Plan	Masterplan
Location of development	Layout of streets and green spaces
Number of houses	Mix of type and tenure of houses
Environmental protection policies	Site specific mitigation
Quantity of employment land	Type, mix and location of premises
Countryside gaps policy	Location within developments



Masterplan principles

- Landscape setting
 - Protecting and enhancing the local environment and preserving assets
 - Maintaining distinctiveness
- Connections
 - To existing settlements and new centres
 - Walking/cycling
 - To transport network
- Gaps
 - Separate and distinct communities
 - Individual identity



What residents have said:

“Not destroying local countryside which can never be replaced”

“Ensuring that existing countryside access is maintained and not infilled to create urban sprawl”

“A true sense of community” “We need affordable housing”

“Proper infrastructure to support the development”



Masterplan

1. How can the settlement be planned to ensure the **environment and landscape is protected and enhanced**?
2. There needs to be a sense of **aspiration and identity**, what could it be like?
3. The proposals should improve **connections** in and around the area. How can we **improve congestion** and make good **walking, cycling** and public transport connections?
4. The **street scene** needs to be well thought out from day one. How can things like safety and bins be built in?
5. It is vital that the new settlement has a **strong sense of community**. What facilities and spaces could there be?
6. There should be a **diverse range of housing**. What could there be and will they be **affordable**?
7. We need to support and attract **local businesses**, how can we do this?



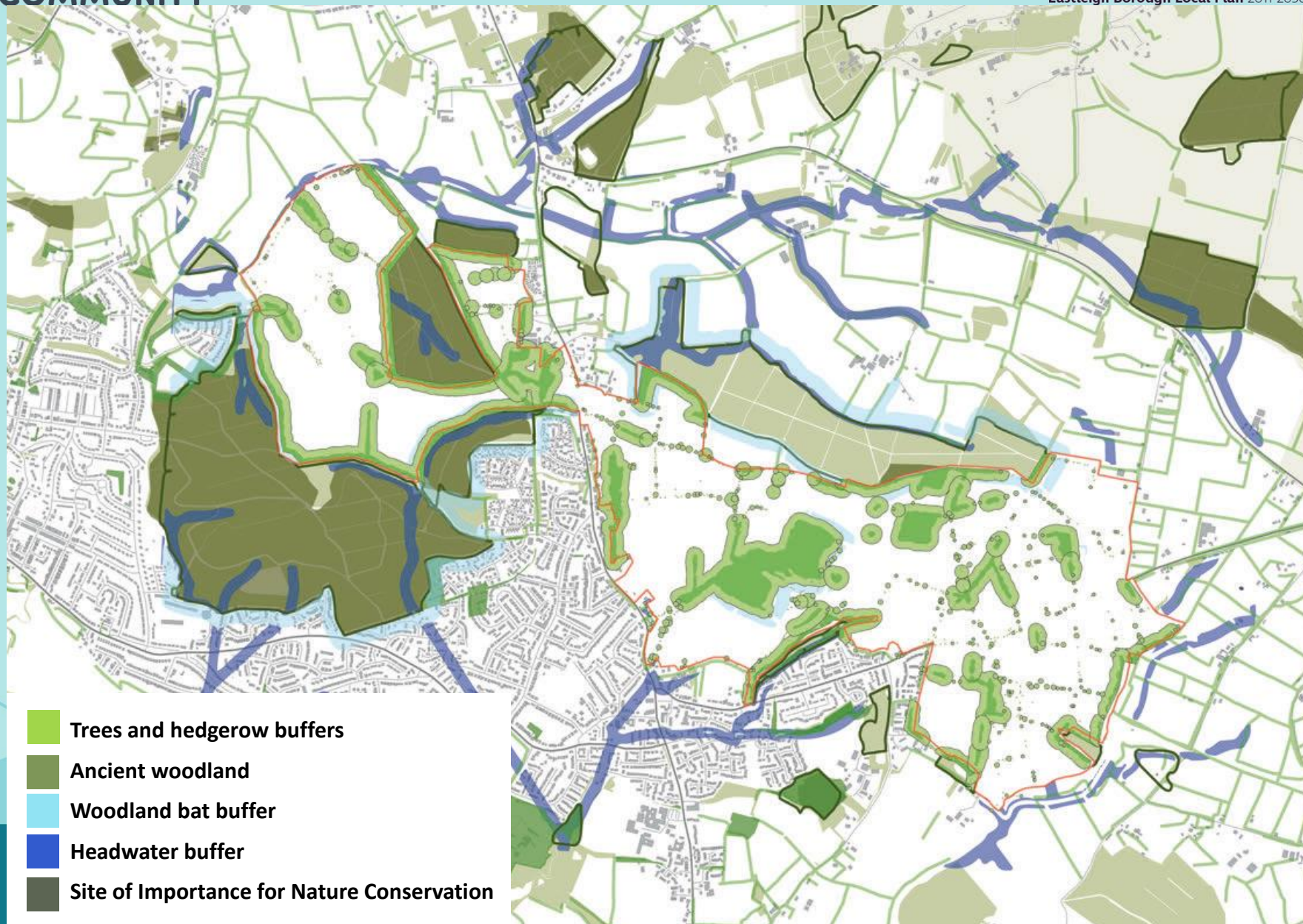
- Woodland
- Hedgerows
- Waterways
- Species
- Semi-rural
- Agriculture

All of these characteristics will help to shape the new development with buffers to protect sensitive environments.

Protecting, enhancing and maintaining the character of the landscape is a key principle of the masterplan.



1. Environment & landscape



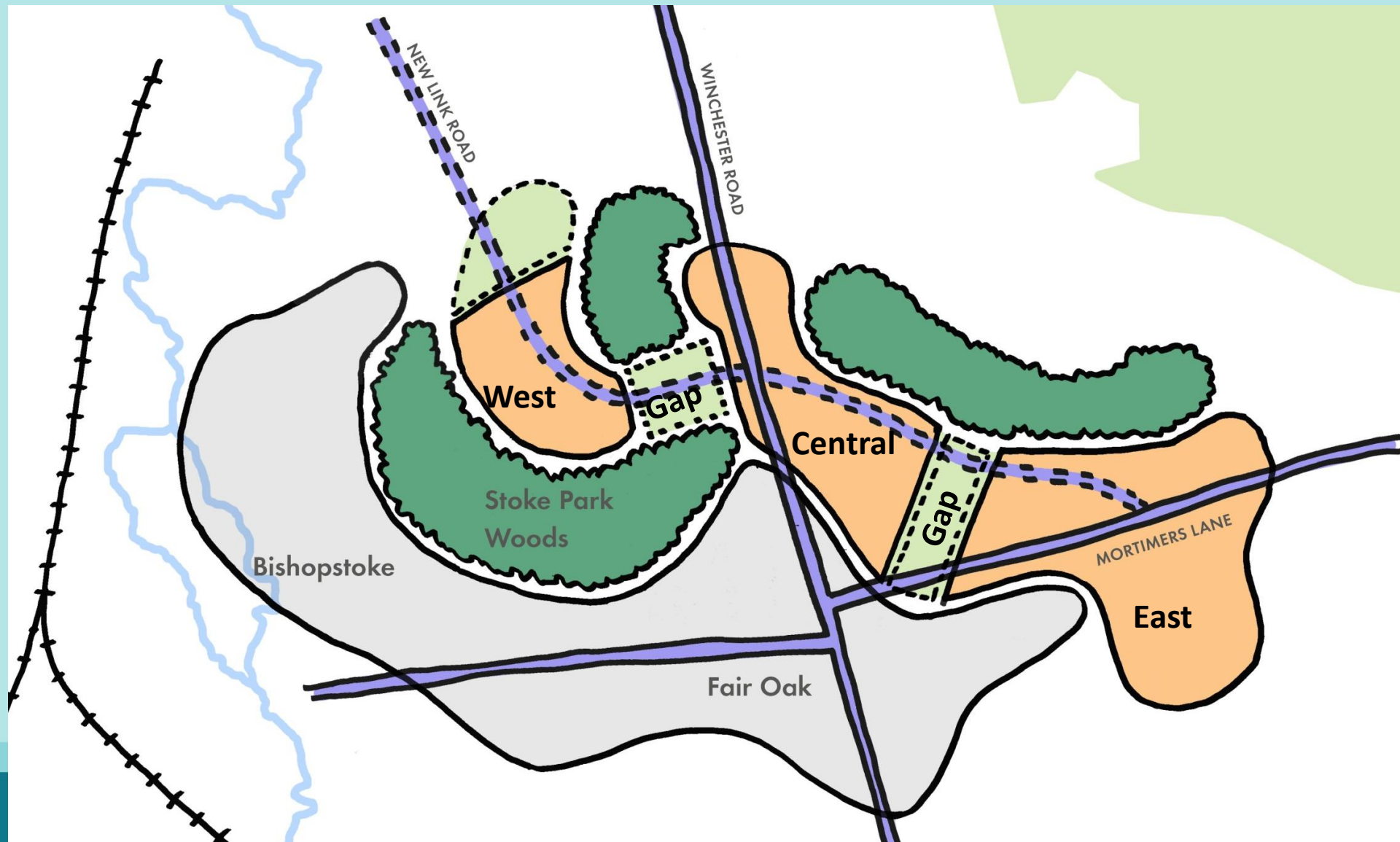
2. Aspiration & identity

- Three distinct settlements
- Countryside gaps
- Relationship with existing settlements/features

Within the landscape and alongside existing settlements we can start to see how three settlements could be located.....



2. Aspiration & identity



2. Aspiration & identity

East, central and west simply describe the geographical locations of the three settlements.

Proper naming is an important part of establishing neighbourhood identity and we are open to suggestions from the community.



3. Connections

- Street networks
- Improving road networks and junctions
- Cycling and walking
- New bus routes
- New link road



4. Street scene

Maintaining landscape characteristics and ensuring practical requirements

- Green streets: maintain hedgerows
- Veteran trees
- Lighting
- Parking
- Services (waste)
- Open space – long term maintenance?

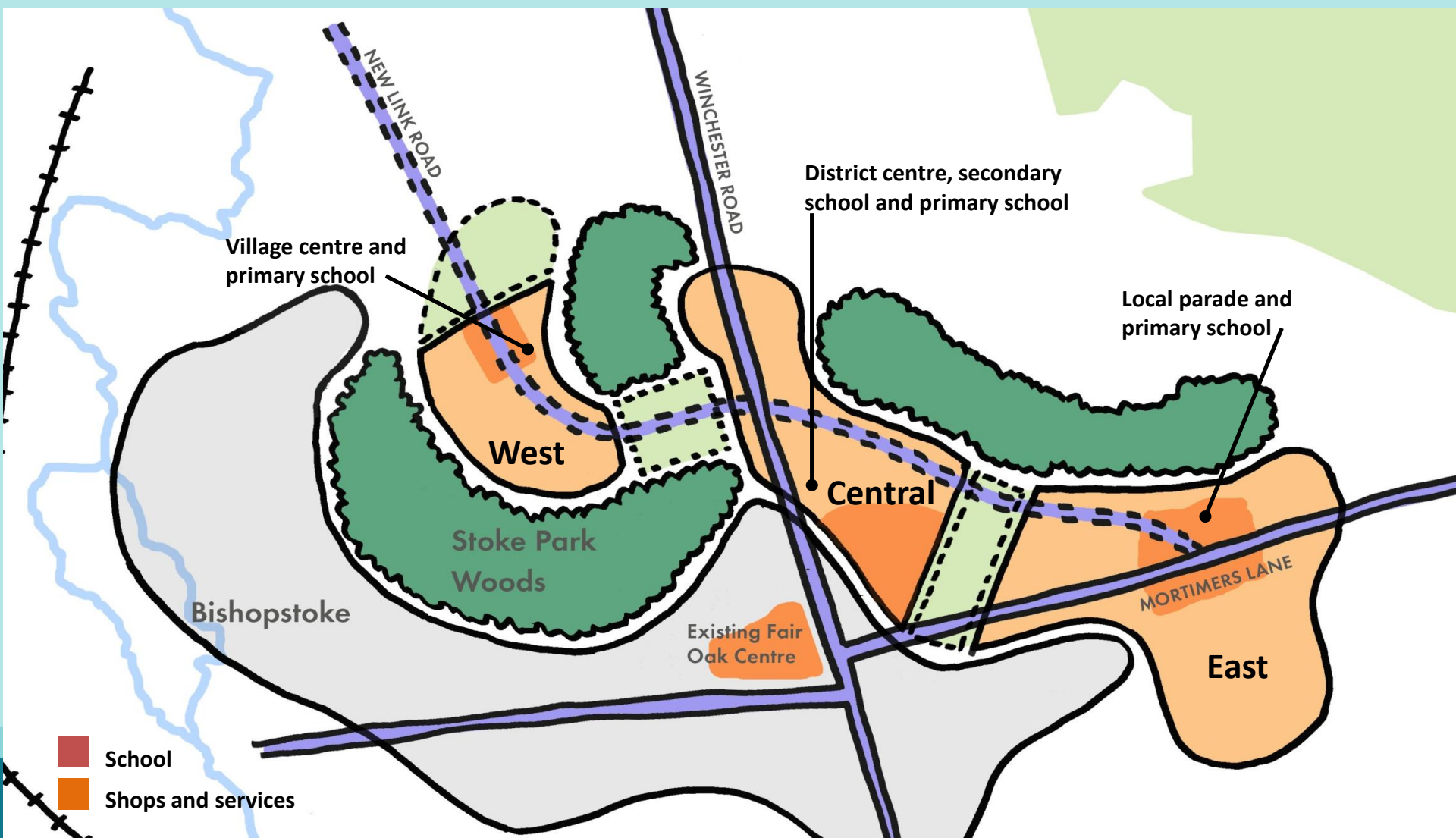


5. Sense of community

- Centres: three distinct settlement centres
- Different neighbourhood characteristics
- Facilities: what is needed and where?
 - Shops
 - Schools
 - Medical centre
 - Community spaces



5. Sense of community



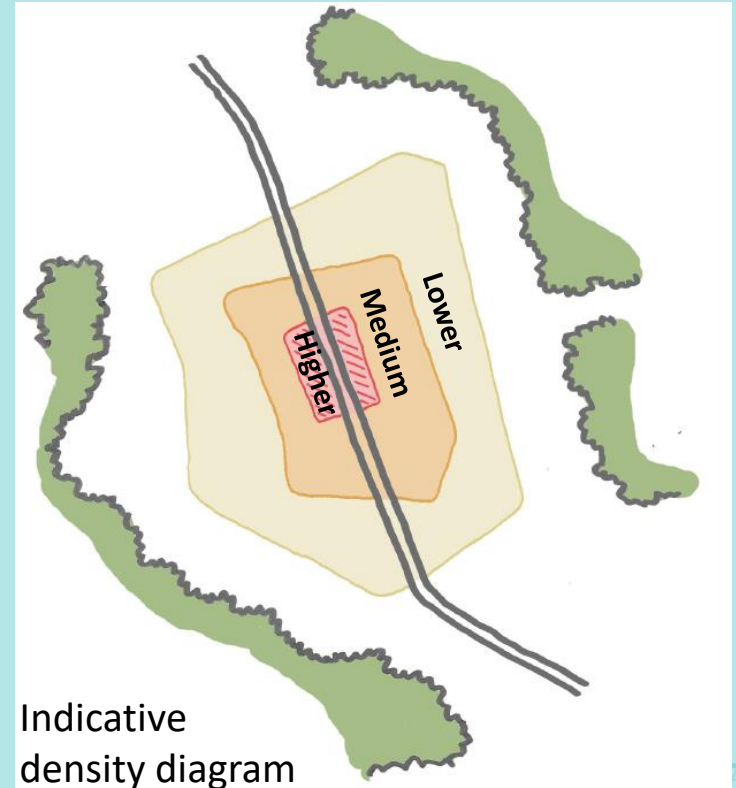
6. Diverse range of housing

- Mix of size and type
- Mix of ownership
- Affordable homes
- Role of Eastleigh Borough Council



6. Housing density

- Higher at centres
- Lower densities at edge to respond to landscape setting



Delivering housing

We want sufficient housing to meet local needs, now and in the future. We will intervene to:

- ensure appropriate ***upfront*** infrastructure to tackle congestion and provide essential facilities
- speed up delivery
- get the right mix of housing types and tenures



7. Local businesses

- Location: ease of access
- Type: offices & light industrial
- Style: in keeping with surroundings
- Range of floor space



Vicarage Farm Business Park



Operational issues

Looking forward we will work with local residents and developers to ensure consideration is given to:

- Site access
- Noise
- How long will it take?



What next?

- Local Plan: formal consultation June/July 2018
- Masterplan: seeking feedback June/July 2018, further engagement as plans develop
- Businesses: ongoing engagement and business conference June 2018

