

**BYGONE DAYS
OF
SHOLING**



"Millers Pond of Yesterday" from an oil painting by H.C. Fudge

PICTORIAL REMINISCENCES OF THE PAST

John Paynter



Above: Jimmy Bowers and Carpenter James outside of a wagon.



Above: Noble Bowers (King of the moss gatherers) with wife Nellie and grandson Robert, pictured gathering moss at Warnford.



Above: Hop picking at Baigent's, Alton. Pictured are Jimmy Bowers, Jimmy Bowers, Sr., Kathy Bowers and young Michael.

Right:
Jimmy Bowers, Sr. and Louise Bowers.





Left:
Bobby Page holding Bobby Jnr., with Wilfred Page
and Violet Bowers.



Right:
Betsy Bowers with a fine basket of flowers.



Above: Elsie and Carpenter James.



Above: Jimmy and Kathy Bowers taken in the early 1930's.



Left:
Strawberry picking at Botley Road, Sholing.
Included in this photo are Noah Bowers, Jnr.,
Bridget Bowers, Job Bowers, and Noah Bowers, Snr.,
along with children Maurice and Barry Bowers and
Shirley Mitchell.



Above: Strawberry picking.



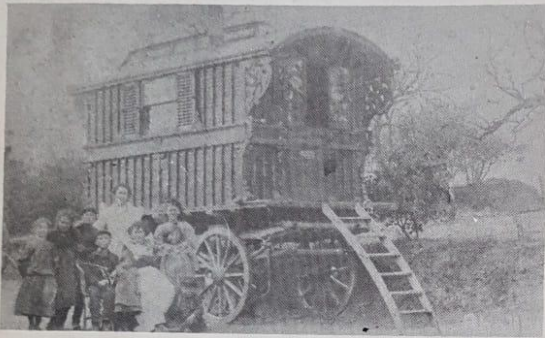
Left:
Young Danny Bowers with
his horse, taken in the mid
1940's.



Right:
Mary Barney pictured outside of her trailer.

Botany Bay

The community of the Botany Bay area of Sholing has always been a very close one and for this reason it is not easy to illustrate. However, this chapter does contain a unique collection from personal family records which have never before been published. It gives an insight into the varied activities carried on in Sholing earlier this century. These include strawberry growing and picking, hop-picking, log-selling, flower-selling, etc., as well as some of the family groups with their homes.



Above: Group photo taken outside of a caravan in Botany Bay Road, 1908.



Above: Paulie Phibbens



Above: Fruit picking at Burrige. Included in this picture are Vandelow Page, Noah Bowers, Bob Page (Vandelow's father), Jimmy, Maurice and Elsie Bowers and Wilfred Page.



Above: Clara Mitchell with children Violet and Mooky.